

The UNPLANNER's Guide to Kagurazaka



Restaurants, cafes, snacks, and other attractions hand-picked by UNPLAN staff!

Kagurazaka Area Map

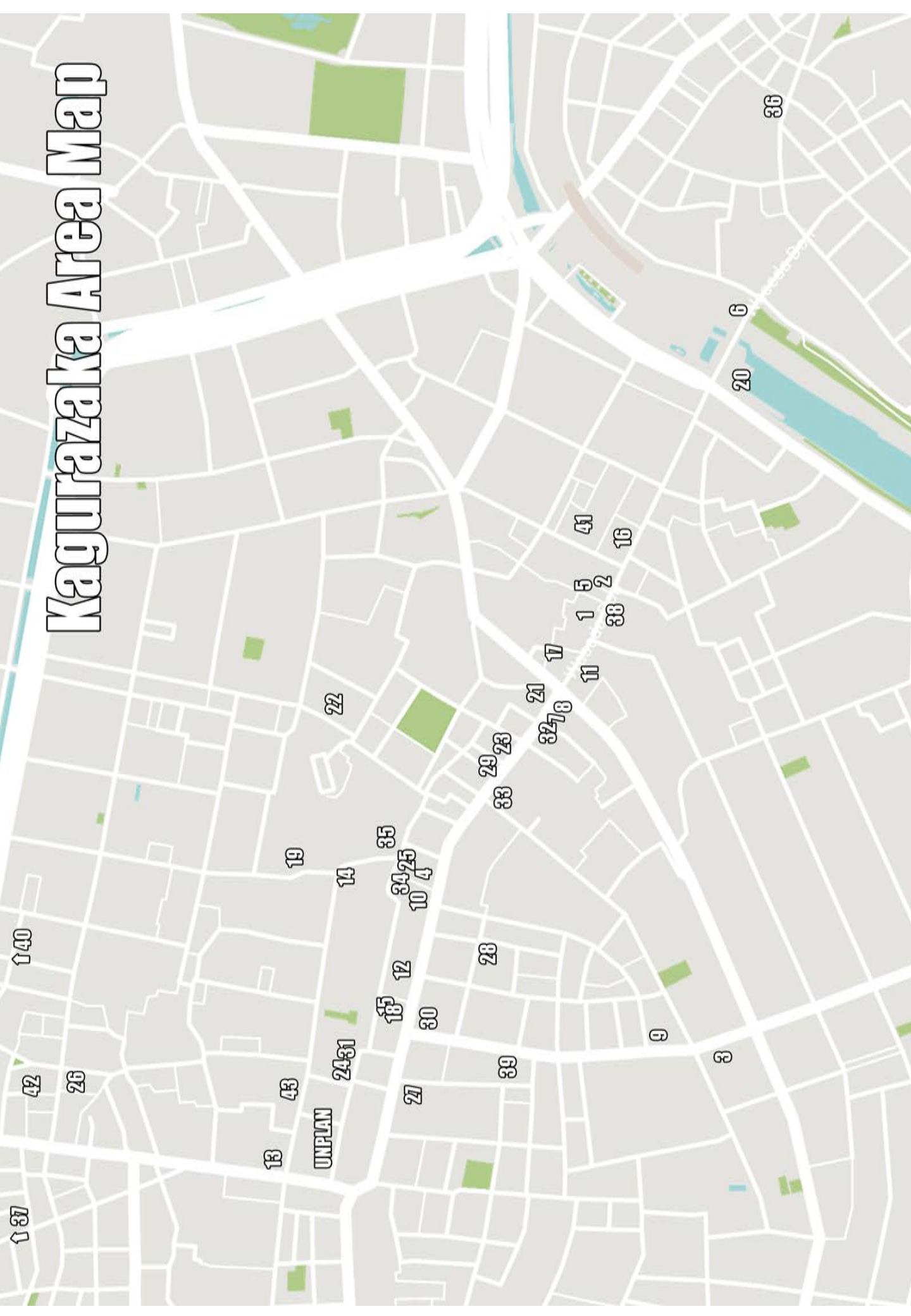


Table of Contents

Restaurants	1
Cafes/Snacks	19
Shopping	32
Tourist attractions/others	36

Tonkatsu Sakura (Tonkatsu)

Specializing in *tonkatsu* (deep-fried pork cutlet), at Sakura you can choose from different types of pork. Open until 11pm, Sakura is a great option if you are looking for a late dinner.



Location: Shinjuku-ku Kagurazaka 5-1-1

Google map link: <https://goo.gl/maps/UTcM34CaZjp>

Distance from UNPLAN: ~10-minute walk

Phone Number: 03 6265 0939

Hours of Operation: 11:00 ~ 23:00 (last order 22:30)

Torijaya Honten (*traditional Japanese*)

Torijaya is famous for their *udonyaki*, which is a hot pot noodle made with udon noodles, great on a cold winter day! You can also get Japanese style set lunches and even nicer course *kaiseki* meals.



Location: Shinjuku-ku Kagurazaka 5-1-1

Google map link: <https://goo.gl/maps/xS62nmMVvhx>

Distance from UNPLAN: ~10-minute walk

Phone Number: 03 3260 6661

Hours of Operation: 11:30~14:30 (l/o 14:00),
16:00~22:00 (l/o 21:30)

Rojiura Curry Samurai (*Soup curry*)

Rojiura Samurai originates from Sapporo, Hokkaido in northern Japan, which is also home to its specialty dish, soup curry. Made with hot broth, a variety of spices, and packed with Hokkaido vegetables, soup curry is a great healthy option that is unique to Japan.



Location: Shinjuku-ku Tansumachi 27

Google map link: <https://goo.gl/maps/pKPJ6VndKDs>

Distance from UNPLAN: ~ 10 minute walk

Phone Number: 03 3266 7062

Hours of Operation: 11:30~ 15:00, 17:30~22:00

Take Chan (izakaya)

If you are looking for the best bang for the buck for a night out, head over to Take Chan. They often have specials at Y200 a drink and also offer a good range of food. To top it off you get the full Japanese experience of being greeted by a robot server upon entering and ordering using a tablet device!



Location: Shinjuku-ku Kagurazaka 6-38

Google map link: <https://goo.gl/maps/P1BbE3CPi1B2>

Distance from UNPLAN: ~7 min walk

Phone Number: 03-5229-6721

Hours of Operation: 16:00~25:00, open until 4am on Fridays and Saturdays

Le Bretagne (*galettes/crepes*)

Known for being the French part of Tokyo, Kagurazaka is also the home to the first restaurant specializing in galettes, which are crepes made with buckwheat flour. Various savoury galettes are available from lunch time as well as sweet crepes. The authentic atmosphere will make you feel like you've stepped away from Japan into a French cafe. Great choice if you are looking to get a break from Japanese



Location: Shinjuku-ku Kagurazaka 4-2

Google map link: <https://goo.gl/maps/Ss8MvGJmWVT2>

Distance from UNPLAN: ~10 min walk

Phone Number: 03 3235 3001

Hours of Operation: 11:30~22:30 (closes 22:00 on Sundays and holidays) Closed on Mondays

Daikonya Kagurazaka (*modern Japanese*)

If you are looking for Japanese cuisine with a modern twist, Daikonya is definitely worth checking out. Dinner courses can be pricy but you can sample their creative dishes at a more reasonable price during lunchtime. Cash only for lunch.



Location: Shinjuku-ku 4-3-15

Google map link: <https://goo.gl/maps/1CGNm5YUZR52>

Distance from UNPLAN: ~ 10 minute walk

Phone Number: 050 5869 8679

Hours of Operation: 11:00~14:00, 17:00~22:00 (closed on Sundays)

Omoi no Ki (*Indian food*)

While Indian food is probably not high on anyone's list while in Japan, Omoi no Ki is one of the most acclaimed Indian joints in Tokyo and certainly worth a visit. Look for the narrow wooden entrance!



Location: Shinjuku-ku Kagurazaka 5-22

Google map link: <https://goo.gl/maps/m276vE5oeJF2>

Distance from UNPLAN: ~10 minute walk

Phone Number: 050 5869 8679

Hours of Operation: 11:30~14:30, 17:30~22:00 (closed on Mondays)

Sanmitei (yakiniku)

Sanmitei is a Japanese BBQ restaurant where you cook your meat right at table. Various kinds of meat and vegetables are available but the *kalbi* (beef) is always a good choice and for those who are looking for something different *tan* (beef tongue) is excellent as well. They also have lunch sets that are a great value!



Location: Shinjuku-ku Kagurazaka 5-22

Google map link: <https://goo.gl/maps/1FuCRTk4t7v>

Distance from UNPLAN: ~ 10 min walk

Phone Number: 03 3513 5190

Hours of Operation: 11:00~14:30,
17:00~22:00(12:00~22:00 on weekends)

Brasserie Gus (*bistro*)

Brasserie Gus' hearty lunch courses are one of the best deals in Kagurazaka. For around 1,000 yen you get bread, salad, an entrée, and a main dish and the quality is great as well. As it's a popular spot with the locals as well, so try to avoid the peak lunch hour between 12~1pm.



Location: Shinjuku-ku Yaraicho 82

Google map link: <https://goo.gl/maps/FRQtuvNLCrT2>

Distance from UNPLAN: ~8 min walk

Phone Number: 03 3268 7157

Hours of Operation: 11:30~14:30, 18:00~21:00, closed Sundays

Karari (Izakaya)

Located right next to Kagurazaka station, Karari is an izakaya that specializes in *yakitori* grilled chicken skewers. All-you-can-drink courses are available as well and they are open all night on weekends!



Location: Shinjuku-ku Kagurazaka 3-1

Google map link: <https://goo.gl/maps/C9L1RcLMdRv>

Distance from UNPLAN: ~5 min walk

Phone Number: 050 5589 8885

Hours of Operation: 17:00~23:30, open until early morning on Fridays and Saturdays

Kurumi (*okonomiyaki*)

Kurumi specializes in *okonomiyaki*, which is often described as a Japanese style savoury pancake, and more specifically Hiroshima style *okonomiyaki*, where cabbage, meat, noodles, and batter are cooked in layers and topped with a sauce and other toppings. The *okonomiyaki* is cooked right in front of you and makes for an interesting visual experience as well.



Location: Shinjuku-ku Kagurazaka 5-30

Google map link: <https://goo.gl/maps/Hgs58pNUqgp>

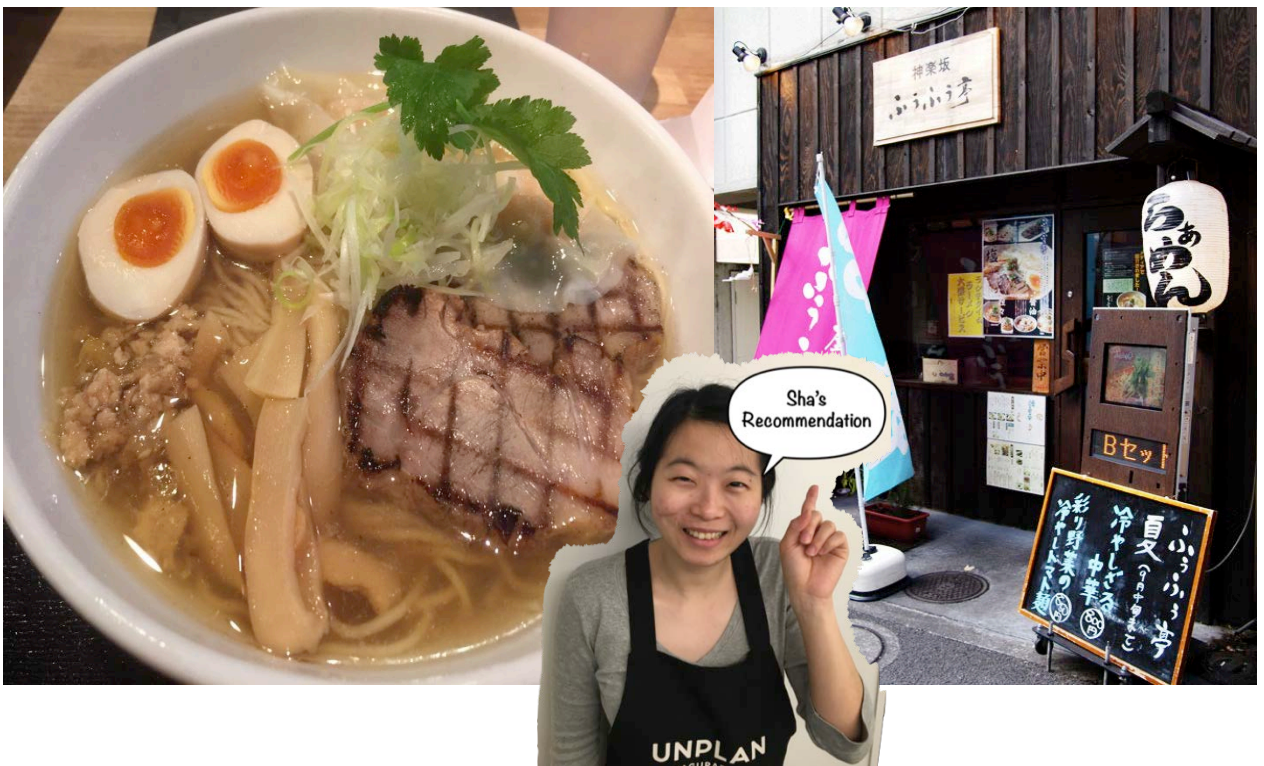
Distance from UNPLAN: ~10 min walk

Phone Number: 03 3269 1414

Hours of Operation: 11:30~14:00, 17:00~22:30 (closes 21:30 on Sundays and holidays), closed on Tuesdays

Fufutei (*ramen*)

If you are looking for a quick casual meal, Fufutei is a popular ramen restaurant just a few minutes walk from UNPLAN. They are famous for their light chicken broth noodles, great if you are feeling a bit under the weather as well!



Location: Shinjuku-ku Yaraicho 118

Google map link: <https://goo.gl/maps/tXvjKjblueHo>

Distance from UNPLAN: ~5 min walk

Phone Number: 03 3267 5576

Hours of Operation: 11:30~15:00, 17:30~22:30 (closes 21:30 on Sundays and holidays)

Martini Burger(hamburgers)

If you are craving food from back home, Martini Burger serves up New York inspired burgers (with names such as the "Brooklyn Burger" and the "Fifth Avenue") . The burgers tend to be a bit more pricy than your usual burger joint in Tokyo, but are beautifully crafted. As the name suggests. Martinis and other cocktails are available as well.



Noel's
Recommendation



Location: Shinjuku-ku Nakazato 31

Google map link: <https://goo.gl/maps/6Cs9YXcUjVr>

Distance from UNPLAN: ~2 min walk

Phone Number: 03 6280 8920

Hours of Operation: 11:00~22:00 (closes 21:00 on Sundays, closed on Mondays)

Kagaya Kagurazaka (Izakaya)

A favorite on UNPLAN's bar hopping nights, Kagaya is a Japanese *izakaya*, a type of bar where you can order various tapas type dishes to be shared over drinks with your friends. Its laid back, down to earth atmosphere is great for striking up a conversation with some locals unwinding after work.



Location: Shinjuku-ku Akagi Motomachi 3-1

Google map link: <https://goo.gl/maps/Xh5TKuNkYdB2>

Distance from UNPLAN: ~5 min walk

Phone Number: 03 3267 8285

Hours of Operation: 17:00 ~ 23:00

Ryoho (Chinese)

Ryoho is your classic old-school Japanese-Chinese joint and everything from the interior to the dishware is full of retro-charm. Their signature dish is the *chahan* fried rice, which is rich and full of little bits of *chashu*, stewed pork which is usually used as a topping on ramen noodles. Look for the yellow canopy that says "The Lahmen."



Location: Shinjuku-ku Yaraicho 123

Google map link: <https://goo.gl/maps/oxmk1caNuwr2>

Distance from UNPLAN: ~5 min walk

Phone Number: 03 3267 6917

Hours of Operation: 11:00~23:00 (closes 22:00 on Saturdays), closed Sundays and holidays

With Green(salad bar)

Looking for vegetarian options? With Green has you covered, with both original salads as well as custom-made options. Be sure to try out their rotating seasonal salads as well. Salads are available for take out!



Location: Shinjuku-ku Kagurazaka 3-2-10 2F

Google map link: <https://goo.gl/maps/1FuCRTk4t7v>

Distance from UNPLAN: ~10 min walk

Phone Number: 03 5579 2905

Hours of Operation: 11:00~22:00 (closes 20:00 on Sundays and holidays)

Kagurazaka Saryo (Green Tea Café)

Kagurazaka is the home to the main branch of this famous matcha green tea café.

You can find many match infused treats such as cakes, parfaits, and even matcha fondue.

They also serve healthy Japanese meals and of course, a large selection of green teas as well. The outdoor patio is a great place to relax on a warm day!



Location: Shinjuku-ku Kagurazaka 5-9

Google map link: <https://goo.gl/maps/FEY9nXegHDF2>

Distance from UNPLAN: 10-minute walk

Phone Number: 03 3266 0880

Hours of Operation: Mon-Sat 11:30 – 23:00

Sun/Holidays: 11:30 – 22:30

Kamome Books/Weekenders Coffee (bookstore/retail/cafe)

Just next to the Yaraicho Exit of Kagurazaka Station is a collaboration space between Kamome Books (bookstore) Weekenders Coffee (coffee shop) and Ondo Kagurazaka, an art gallery. Aside from magazines, books, and comics, Kamome books also sells various Japanese stationery goods that make for great gifts. A perfect stop before or getting off the metro!



Location: Shinjuku-ku Yaraicho 123

Google map link: <https://goo.gl/maps/Zg8n6z2EwTy>

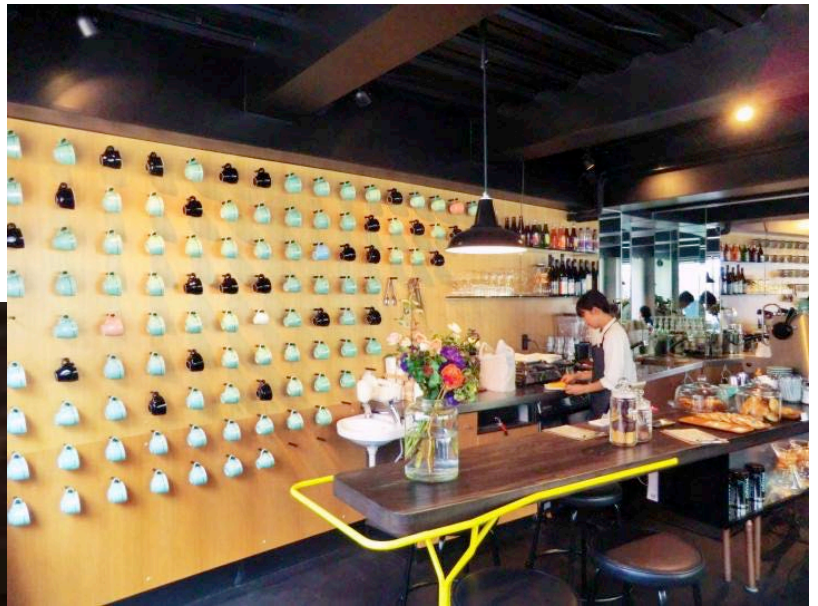
Distance from UNPLAN: ~3 min walk

Phone Number: 03 5228 5490

Hours of Operation: 11:00~21:00 (closed Wednesdays)

Mojo Coffee (café)

Hailing from New Zealand, Mojo was one of the first overseas coffee companies to open up a shop in Japan. They serve a distinctly Kiwi style of coffee in a hip cozy space that is particularly popular with young Japanese women.



Location: Shinjuku-ku Akagi Motomachi 4-11

Googlemap link: <https://goo.gl/maps/HDZS3LAuCUA2>

Distance from UNPLAN: ~5 min walk

Phone Number: 03 6265 3286

Hours of Operation: 7:30~19:30 (9:00~20:00 on weekends)

Canal Café (Café)

Canal Café is located on the Sotobori Canal and has a beautiful outdoor patio overlooking the water. In spring you can also get a great view of cherry blossoms along the canal. The food offering is mainly western including dishes like pasta and pizza.



Location: Shinjuku-ku Kagurazaka 1 - 9

Google map link: <https://goo.gl/maps/3hAnA9hRFXn>

Distance from UNPLAN: 10+ minute walk or 2 min train

Phone Number: 03 3260 8068

Hours of Operation: 11:30 ~ 23:00 (closes 21:30 on Sundays and national holidays)

Gojuban (*nikuman*)

Nikuman are Chinese-style buns with various fillings from meat to sweet black bean paste. It makes for a great quick snack when you are walking around Kagurazaka.



Location: Shinjuku-ku Kagurazaka 6-4

Google map link: <https://goo.gl/maps/fArRY8NsGT32>

Distance from UNPLAN: ~10 min walk

Phone Number: 03 3260 0066

Hours of Operation: 10:00~20:00 (closes 19:00 on Fridays and Saturdays)

Pain des Philosophes (bakery)

Pain des Philosophes offers beautiful croissants, baguettes and other baked goods that are perfect for taking out and enjoying at the nearby Shirogane Park.



Location: Shinjuku-ku Higashigokencho 1-8

Google map link: <https://goo.gl/maps/FrDmZbWVSf62>

Distance from UNPLAN: ~7 minute walk

Phone Number: 050 5872 6375

Hours of Operation: 10:00 ~ 17:00 (closed Mondays)

Onoya (fried food)

Walking down the main street in Kagurazaka you will see people lined up for Onoya's fried goods, such as *korokke* (deep fried potato croquettes) and *menchi katsu* (deep fried meat patty). The most popular perhaps is the Scotch egg, an entire boiled egg covered in a meat patty and deep fried to perfection. While they are usually eaten with rice, they make for a great snack to take to go.



Location: Shinjuku-ku Yaraicho 138

Google map link: <https://goo.gl/maps/CN3PWYQKyED2>

Distance from UNPLAN: ~ 10 min walk

Phone Number: 03 3260 2947

Hours of Operation: 10:30~ 19:00 closed public holidays

E-to (*bento*)

E-to is known for their healthy *bento* lunch boxes made with organic vegetables. The menu changes daily and they make for a great option that is both healthy and reasonably priced. They also have an interesting selection of cups/plates/bowls. Just a couple minute's walk from UNPLAN!



Location: Shinjuku-ku Yaraicho 138

Google map link: <https://goo.gl/maps/tJ8jouv1mKw>

Distance from UNPLAN: ~2 min walk

Phone Number: 03 6457 5009

Hours of Operation: 11:30~20:00 closed on Wednesdays

Kameido (*bakery*)

While Kameido serves various Japanese style baked goods, they are best known for their *cream pan*, a sweet bun filled with warm custard cream. Their popularity goes so far that people often order them in advance and buy dozens at a time. Open from 8am, they are a great option for breakfast as well as an afternoon snack.



Subin's
Recommendation



Location: Shinjuku-ku Kagurazaka 6-39

Google map link: <https://goo.gl/maps/2CW8vw5wUX62>

Distance from UNPLAN: ~5 min walk

Phone Number: 03 3269 0480

Hours of Operation: 8:00~19:00 (9:30~18:00 on Saturdays) Closed on Sundays and holidays

Naniwaya (*taiyaki*)

Located in the charming *Jizodori* Shopping Street, Naniwaya specializes in *taiyaki*, traditional Japanese pastry filled with sweet red bean paste and shaped like fish. If you are lucky you will be able to watch them make them using the steel griddles. They also serve miniature versions of the pastries that make for great souvenirs!



Location: Bunkyo-ku, Sekiguchi 1-5-8

Google map link: <https://goo.gl/maps/DfUVKTchXx82>

Distance from UNPLAN: ~ 10 min walk

Phone Number: 03 3268 6261

Hours of Operation: 10:00~ 18:30 Closed on Tuesdays

Shimizu (*dessert*)

Located just a few minutes from UNPLAN, Shimizu is a tiny shop that makes Japanese confectionery (called *wagashi*). The retro interior will make you feel like you've stepped back in time and their handmade treats are almost too beautiful to eat.



Location: Shinjuku-ku Kagurazaka 3-2-10

Google map link: <https://goo.gl/maps/xjGoxQ14xMm>

Distance from UNPLAN: ~3 min walk

Phone Number: 03 3268 7438

Hours of Operation: 9:30 ~ 19:30

Acho Kagurazaka(*dessert*)

Custard pudding (called *purin* in Japanese) is a ubiquitous dessert in Japan with magazines and TV programs dedicated to the popular pudding shops throughout the country. Acho is Kagurazaka's representative in this category and their puddings make for a great afternoon dessert.



Location: Shinjuku-ku Yaraicho 103

Google map link: <https://goo.gl/maps/9Zw5WJArTAU2>

Distance from UNPLAN: ~5 min walk

Phone Number: 03 3269 8933

Hours of Operation: 11:00~18:00 closed on Tuesdays and 1st and 3rd Wednesdays of the month

Baikatei (*dessert*)

Baikatei is a very popular Japanese confectionery shop and on weekends it's always full of people. It's famous for its lemon daifuku (lemon flavoured rice cake filled with red bean paste) and its ayu tempura monaka, a confectionery shaped like ayu, a type of river fish.



Location: Shinjuku-ku Kagurazaka 6-15

Googl map link: <https://goo.gl/maps/11oCv413Gsz>

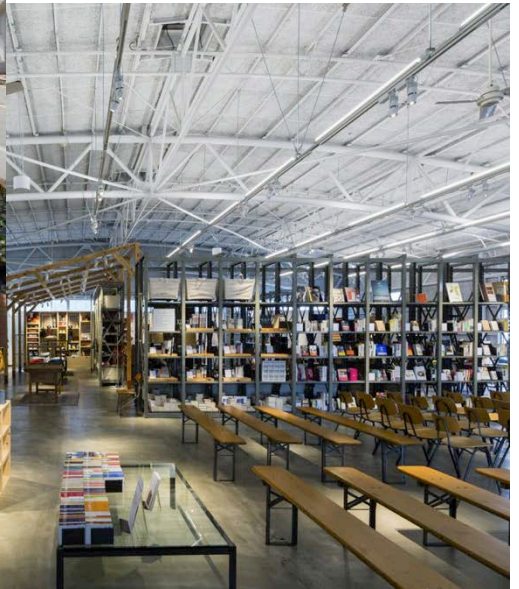
Distance from UNPLAN: ~7 min walk

Phone number: 03 5228 0727

Hours of Operation: 10:00~20:00

La Kagu (retail/café)

Located right across from the #2 exit of Kagurazaka Station, the wooden steps of La Kagu are a famous landmark in town. La Kagu is a large complex that consists of retail space, gallery space, and a café. The retail space features a rotating line up of shops, which have included brands like Paul Frank and the gallery space frequently holds art exhibitions and displays.



Location: Shinjuku-ku Yaraicho 67

Google map link: <https://goo.gl/maps/8GgSSJV2WGn>

Distance from UNPLAN: ~3 min walk

Phone Number: 03 5579 2130

Hours of Operation: 11:00 ~ 20:00

Taiyo Record (*record shop*)

Just a couple minute's walk from UNPLAN is Taiyo Records, an assuming record shop with a white whale as its logo. While a record shop in name, their stock consists mainly of CD's with a strong focus on South American jazz, bossa nova, and folk music.



Location: Shinjuku-ku Kagurazaka 5-36

Google map link: <https://goo.gl/maps/6eVioT1v6NS2>

Distance from UNPLAN: ~2 min walk

Phone Number: 03 3235 8825

Hours of Operation: 12:00 ~ 19:00, closed Wednesdays and 3rd Sundays of the month

Okashi no Machioka (*shopping*)

Okashi no Machioka is a chain store that specializes in Japanese snacks. While it can be found throughout Tokyo, it's still a fun experience to check out the huge range of different snacks for prices that are cheaper than the convenient store. It's the place to go if you are trying to shop for last minute souvenirs for your friends and family!



Location: Shinjuku-ku Kagurazaka 5-21

Google map link: <https://goo.gl/maps/ct5y4hnAkwy>

Distance from UNPLAN: ~10 min walk

Phone Number: 03 5228 1919

Hours of Operation: 10:00 ~ 21:00

Kagurazaka Plus (Retail)

Kagurazaka Plus is a shop that specializes in *zakka*, which is the Japanese word for miscellaneous goods ranging from dishware, stationery, to clothing. They also frequent host pop up shops which in the past have included things such as chocolate, bread, to hand-made cast-iron cookery.



Location: Shinjuku-ku Kagurazaka 6-58

Google map link: <https://goo.gl/maps/RFQNVD08hBP2>

Distance from UNPLAN: ~7 min walk

Phone Number: 03 3269 0052

Hours of Operation: 11:00 ~ 19:00

Neko no Yubinkyoku (gift shop)

Neko no Yubinkyoku, which literally means “Cat’s Post Office” is a shop that sells everything that has cats on it/is shaped like a cat. The cramped store space is filled with cat-related items that make for interesting gifts.



Location: Shinjuku-ku Yaraicho 162

Google map link: <https://goo.gl/maps/vFcLMmz1BPU2>

Distance from UNPLAN: ~5 min walk

Phone Number: 070 5517 4125

Hours of Operation: 13:00 ~ 17:00

Akagi Shrine (*shrine*)

Known for its modern re-design by the famed architect Kengo Kuma, Akagi Shrine is a beautiful shrine tucked away in the backstreets of Kagurazaka. The shrine complex also houses Akagi Café, which interestingly serves Italian cuisine.



Location: Shinjuku-ku Akagi Motomachi 1-10

Google map link: <https://goo.gl/maps/RmBU1ceVf9A2>

Distance from UNPLAN: ~5 min walk

Phone Number: 03 3260 5071

Hours of Operation: shrine grounds open 24 hrs

Tokyo Daijingu(*shrine*)

A branch of the Ise Grand Shrine, which is one of the three most important shrines in Japan. Tokyo Daijingu is also known for being a shrine for “*enmusubi*”, or pair-making, and during New Years hundreds of single men and women line up to pray for a partner.



Location: Chiyoda-ku Fujimi 2-4-1

Google map link: <https://goo.gl/maps/N51QpyVB2jM2>

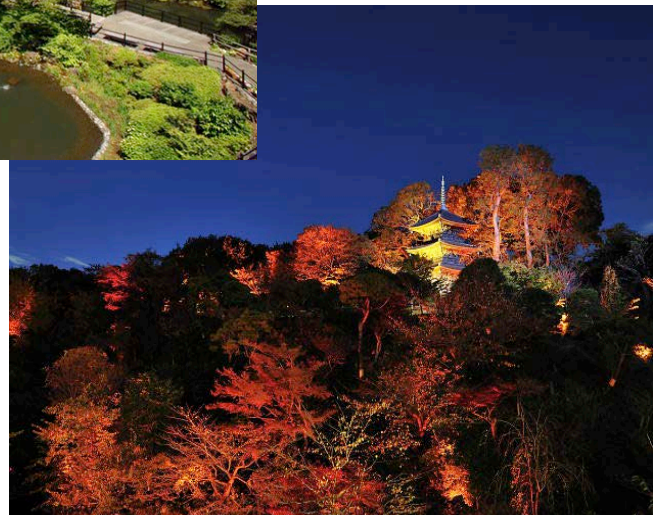
Distance from UNPLAN: ~20 min walk

Phone Number: 03 3262 3566

Hours of Operation: 8:00 ~ 19:00

Chizanso(*Japanese garden*)

Chinzanso is a traditional Japanese garden located on the grounds of Chinzanso Hotel. Complete with a pond and a pagoda, it is a beautiful getaway from the concrete buildings in the area. Fall is particularly a popular time with the many Japanese maple trees in full color with light up displays in the evenings.



Location: Bunkyo-ku Sekiguchi 2-10-8

Google map link: <https://goo.gl/maps/Ge6ah25b9XR2>

Distance from UNPLAN: ~20 min walk

Phone Number: 03 3943 1111

Hours of Operation: N/A

Bishamonten Zenkokuji (*temple*)

Located in the centre of Kagurazaka, Bishamonten is a temple first founded by Japanese *shogun* (general) Tokugawa Ieyasu. Its striking red and white color scheme makes for a great photo spot. Occasionally festivals and markets are held on the temple's premises.



Location: Shinjuku-ku Kagurazaka 5-36

Google map link: <https://goo.gl/maps/6eVioT1v6NS2>

Distance from UNPLAN: ~10 min walk

Phone Number: 03 3269 0641

Hours of Operation: 9:00 ~ 18:00

Yarai Nohgakudo (*Noh theatre*)

Noh is a type of traditional Japanese theatre that can be hard to appreciate for many foreigners, however the chance to watch a *Noh* performance at this impressive venue is certainly worth a visit. Shows are irregular and take place only once a month but sometimes you are able to get a tour of the theatre. Your best bet is to show up and ask the staff.



Location: Shinjuku-ku Yaraicho 60

Google map link: <https://goo.gl/maps/KzxGGJub9cr>

Distance from UNPLAN: ~5 min walk

Phone Number: 03 3268 7311

Hours of Operation: Irregular

T-Wall Edogawabashi (*climbing gym*)

T-Wall is a popular chain of climbing gyms in Tokyo and the Edogawabashi location is just a 10~15 minute walk away from UNPLAN. They have both bouldering and top-rope climbing available. Rental shoes are available (extra cost) and they also hold simple training sessions for first timers.



Location: Bunkyo-ku Suido 2-5-23

Google map link: <https://goo.gl/maps/YJCJ2Asnito>

Distance from UNPLAN: ~15 min walk

Phone Number: 03 5802 2273

Hours of Operation: 14:00~23:00 (10:00~20:00 on weekends and holidays)

Kakurenbo Yokocho (*street*)

Kakurenbo Yokocho (Hide and Seek Alley) is a cobbled-stone lined street full of small drinking holes and restaurants. Many of the shops are quite Japanese and a bit difficult to walk into however just strolling through the streets is a nice enough experience that makes you feel as though you are in Kyoto.



Location: Shinjuku-ku Kagurazaka 3

Google map link: <https://goo.gl/maps/QfWwfER1eRB2>

Distance from UNPLAN: ~ 10 min walk

Hours of Operation: 24hrs (shop opening hours vary)

Jizodori Shotengai (*shopping district*)

Jizodori Shotengai is an old-fashioned shopping arcade located near Edogawabashi Station. The district consists mainly of mom&pop stores that have been open for decades and specializes in one thing. A walk through the *shotengai* provides a unique insight into every day Japanese life.



Location: Bunkyo-ku Sekiguchi 1

Google map link: <https://goo.gl/maps/iUvPnLxdLY82>

Distance from UNPLAN: ~ 10 min walk

Hours of Operation: 24hrs (shop opening hours vary)

Kannariyu (*sen*to bathhouse)

If you are looking to have a truly Japanese experience, you may want to try visiting a *sen*to, or a Japanese public bathhouse. Kan-nari-yu welcomes foreigners and tattoos are OK too. Be sure to brush up on your *sen*to etiquette before you go! (our staff will be able to help you out!)



Location: Shinjuku-ku Nakazato 13

Google map link: <https://goo.gl/maps/yNySbRENw9A2>

Distance from UNPLAN: ~2 min walk

Phone Number: 03 3268 6516

Hours of Operation: 15:00~23:30, closed Fridays